

Apocryphal Dances

for four percussionists and prepared piano

David M. Gordon

Apocryphal Dances

for Kathleen Kastner and the Wheaton College Percussion Ensemble

David M. Gordon

Duration: ca. 15'

- | | | |
|------|--------------------|--------|
| I. | Yxoi Eth Drazhim | pg. 1 |
| II. | The Parakeet Coil | pg. 15 |
| III. | Sesquilinear Tango | pg. 35 |
| IV. | Churghin Taqma | pg. 53 |

Instrumentation

Percussion 1

Almglocke

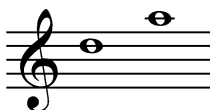
- Pitch needed:



- The almglocke can be slightly (i.e., up to a quarter-tone) out-of-tune with other instruments in the ensemble.
- The almglocke is written at sounding pitch.

2 Brake Drums

- Preferred approximate pitches:



Flex-a-Tone

- Lowest pitch needed:



- The lowest pitch on the flex-a-tone can be slightly (i.e., up to a quarter-tone) out-of-tune with other instruments in the ensemble.

Large LP Vibra-Tone®

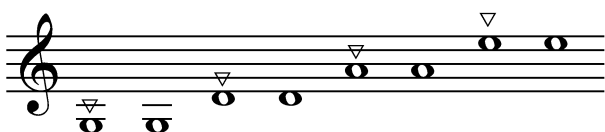
- Pitch needed:



- The vibra-tone can be slightly (i.e., up to a quarter-tone) out-of-tune with other instruments in the ensemble.

Mandolin

- The open strings must be tuned as follows (see below for details on the special notation):



- In the score and part, the mandolin is notated as though it is tuned normally.

Slide Whistle

- Must be tuned precisely in relation to the pianist's melodia.

Tambourine

- Must have a head.
- Must be laid on a table and muted by placing a cloth on the head.

6 Thai Button Gongs

- Pitches needed:



- The gongs can be slightly (i.e., up to a quarter-tone) out-of-tune with each other and with other instruments in the ensemble.
- The gongs must be suspended so that they resonate fully.
- The low F gong is shared with Percussion 2.

Percussion 2

Autoharp

- The bottom 22 strings must be tuned as follows (see below for details on the special notation):



- In the score and part, the autoharp is notated as though it is tuned normally.

Large Bass Drum

- Shared with Percussion 3.

Large Bell Tree

Diatonic Harmonica in G

- The harmonica can be slightly (i.e., up to a quarter-tone) out-of-tune with other instruments in the ensemble.
- The second hole from the bottom (which produces B and D) must be covered with a piece of tape so that it doesn't sound when the harmonica is being played.

Orchestra Bells

- Sound two octaves higher than written.

Large Tam-Tam

3 Thai Button Gongs

- Pitches needed:



- The gongs can be slightly (i.e., up to a quarter-tone) out-of-tune with each other and with other instruments in the ensemble.
- The gongs must be suspended so that they resonate fully.
- The low F gong is shared with Percussion 1.

Wind Wand

Percussion 3

Large Bass Drum

- Shared with Percussion 2.

2 Brake Drums

- Preferred approximate pitches:



Chimes

- The pedal must be fixed so that it remains down for the entire work.
- Shared with Percussion 4.

Crotales

Cuica

Diatonic Harmonica in F#

- The harmonica can be slightly (i.e., up to a quarter-tone) out-of-tune with other instruments in the ensemble.

Diatonic Harmonica in G

- The harmonica can be slightly (i.e., up to a quarter-tone) out-of-tune with other instruments in the ensemble.
- The fifth hole from the bottom (which produces B and C) must be covered with a piece of tape so that it doesn't sound when the harmonica is being played.

2 Peking Opera Gongs

- Pitches needed:



- The gongs can be slightly (i.e., up to a quarter-tone) out-of-tune with each other and with other instruments in the ensemble.
- The gongs must be laid on a foam pad so that they are partly muted.

Vibraphone

- The motor must be off for the entire work.

Percussion 4

Chimes

- The pedal must be fixed so that it remains down for the entire work.
- Shared with Percussion 3.

Marimba

Slide Whistle

- Must be tuned precisely in relation to the pianist's melodica.

Thai Button Gong

- Pitch needed:



- The gong can be slightly (i.e., up to a quarter-tone) out-of-tune with other instruments in the ensemble.
- The gong must be laid on a foam pad so that it is partly muted.

Toy Piano

- Range needed:



- The toy piano can be somewhat out-of-tune with itself and with other instruments in the ensemble.

Small LP Vibra-Tone®

- Pitch needed:



- The vibra-tone can be slightly (i.e., up to a quarter-tone) out-of-tune with other instruments in the ensemble.

Prepared Piano

Prepared Piano

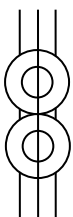
- The following pitches must be prepared by placing a vinyl machine screw between the second and third strings (i.e., the center and right strings). Whenever possible, the screws should be placed approximately midway between the damper and the bridge. In the case of lower strings that cross above or below other strings, however, it may be necessary to place the screws closer to, or even behind, the damper. All screws should fit tightly between the strings so as not to buzz, and the heads of the screws should not touch the strings. Recommended screw sizes are #10-24 × 1" (for low and mid-range strings) and #8-32 × 1" (for high strings), though the best choices will ultimately depend upon the construction of the piano being used.



- The following strings must be prepared by placing a pair of flat steel washers above the two outer strings and below the center string.



The two washers should be touching each other, as shown below:



The washers should be approximately 5/8" in diameter so as to extend slightly beyond the outer strings without touching the adjacent notes. If prepared correctly, the two notes indicated above should produce a sustained metallic buzzing sound when they are struck. When not in use, these strings must be muted by placing rubber wedges between them. This is necessary in order to prevent the washers from rattling through sympathetic string vibrations. Instructions for the removal and insertion of these mutes are included in the score and part.

- Special care must be taken to ensure that the *una corda* pedal mechanism is functioning properly. When the *una corda* pedal is depressed, only the second and third strings should be struck by the hammer, producing an audible change in both the timbre and pitch of the prepared notes. Unfortunately, most *una corda* mechanisms are out of adjustment, causing the hammers to strike all three strings when the pedal is depressed. It is crucial that this be rectified in order for the correct timbres and pitches to be produced in the fourth movement.
- The sustain pedal must be fixed so that it remains down for the entire work.

Melodica

- Can be slightly (i.e., up to a quarter-tone) out-of-tune with other instruments in the ensemble (except for the two slide whistles, which must be precisely tuned in relation to the melodica).

Abbreviations

- Ahp Autoharp
- Alm Almglocke
- B D Bass Drum
- BDB Standard Bass Drum Beater(s)
- B Gng Thai Button Gong(s)
- Bk Dr Brake Drum(s)
- Bls Orchestra Bells
- Bl Tr Bell Tree
- Br Brass Mallet(s)
- Br or VHP Brass or Very Hard Plastic Mallet(s) (brass is preferable but may damage the chimes)
- C Bow Cello Bow
- Chm Chimes
- Cl Damp Cloth
- Cro Crotales
- Cui Cuica
- Flx-T Flex-a-Tone
- FT Felt Timpani Mallet(s)
- Harm Harmonica
- HY Hard Yarn Mallet(s)
- Mand Mandolin
- Mar Marimba
- MHR Medium-Hard Rubber Mallet(s)
- MHY Medium-Hard Yarn Mallet
- MP Medium Plastic Mallet(s)
- MPI Medium Plectrum
- MtRd Multi-Rod (i.e., Hot Rod) Stick(s)
- MY Medium Yarn Mallet(s)
- O Gng Peking Opera Gongs
- RH Rawhide Chime Hammer(s)
- SD Snare Drum Stick(s)
- SDB Snare Drum Sticks Played with the Butts
- SR Soft Rubber Mallet(s)
- S W Slide Whistle
- SY Soft Yarn Mallet(s)
- Tamb Tambourine
- T Pno Toy Piano
- T-T Tam-Tam
- TTB Standard Tam-Tam Beater(s)
- Vbr Vibraphone
- V-T Vibra-Tone
- WT Wooden-Headed Timpani Mallet(s)
- W W Wind Wand

Special Notations



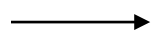
Quarter-tone higher than the indicated pitch.



Quarter-tone lower than the indicated pitch.



Play all of the notes between the indicated boundary pitches.



Continue observing the indicated marking (e.g., *8va*, *8vb*, etc.) until further notice.



Stop observing the indicated marking (e.g., *8va*, *8vb*, etc.).

Special Performance Instruction

- Throughout the work, all instruments must be allowed to ring.